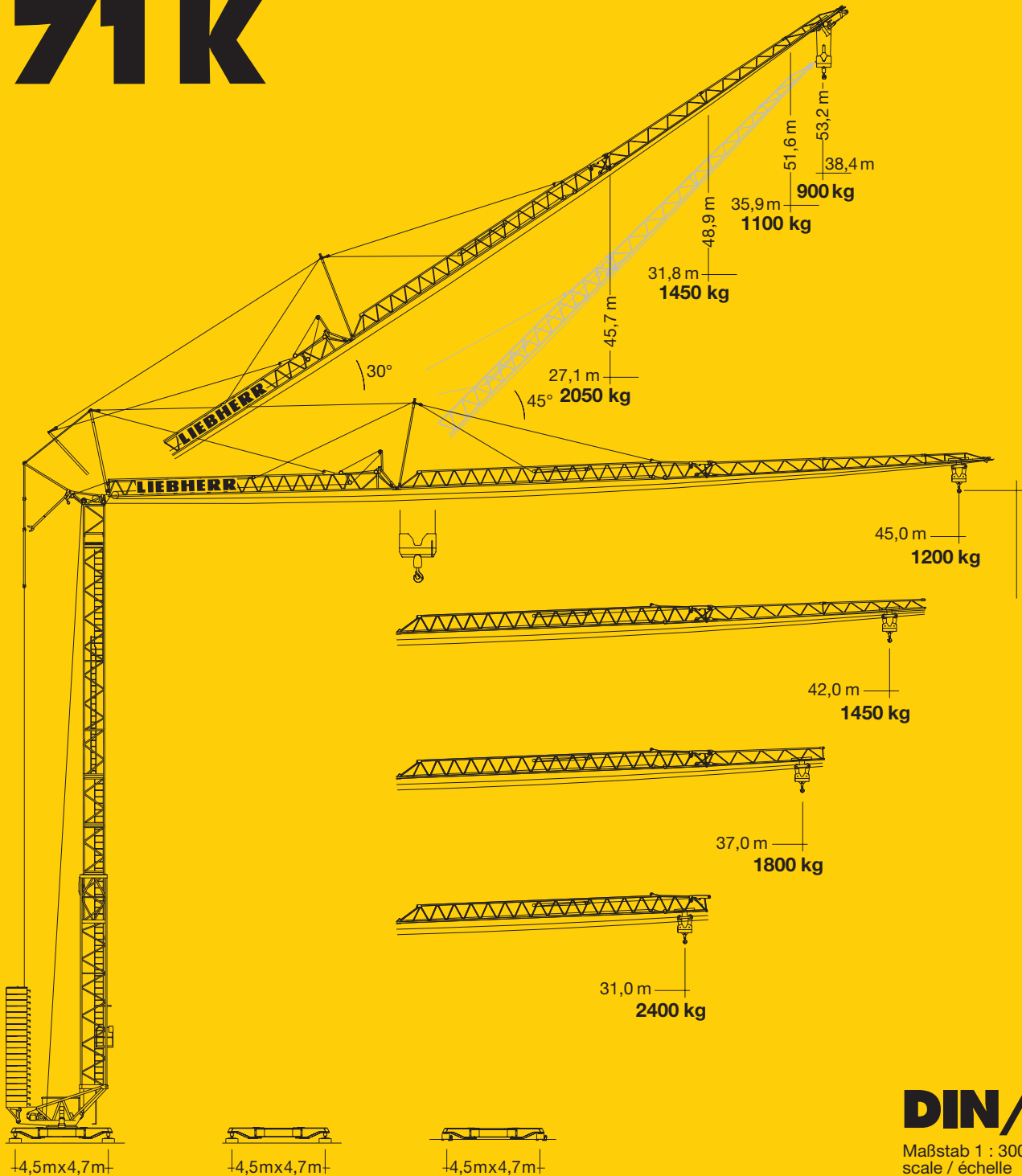


**Tower Crane
Grue à tour**

Turmdrehkran 71 K

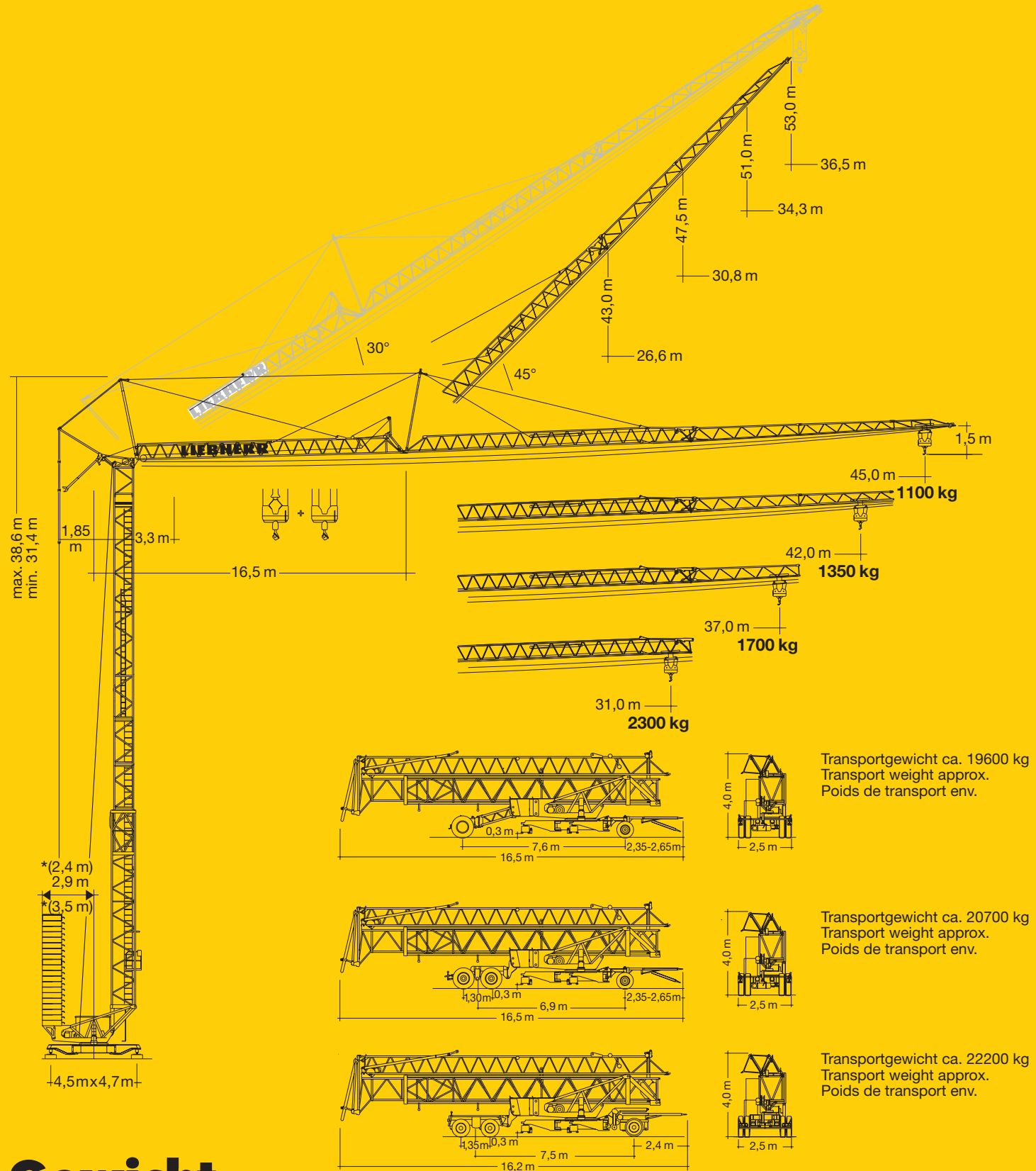


(13,7 m) 15,5 m – 17,6 m – 20,3 m – 23,1 m – 25,5 m – 27,9 m – 30,3 m – 32,7 m – (35,1 m)
 schienenfahrbär / rail-going / mobile
 stationär / stationary / stationnaire

DIN/FEM

Maßstab 1 : 300
 scale / échelle

LIEBHERR



Gewicht

Weight

Poids

Gegengewicht	r = 3,5 m	29280 kg	Konstruktionsgewicht ca.	16500 kg
Counterweight	r = 2,9 m	36600 kg	Dead weight approx.	
Contrepoids	r = 2,4 m	36600 kg	Poids de la construction env.	

* siehe BAL

Ausladung und Tragfähigkeit

Radius and capacity / Portée et charge





Auslegerlänge Length of jib Longueur de flèche m	max. kg m/kg	Drehkreis 2,9/3,5 m																							
		m/kg																							
45,0	3,3 - 20,0 3050	3050	3050	2790	2530	2310	2120	2040	1960	1890	1820	1750	1690	1630	1580	1530	1480	1430	1390	1350	1310	1270	1235	1200	
42,0	3,3 - 21,7 3050	3050	3050	3050	2770	2540	2330	2240	2160	2080	2000	1930	1870	1800	1740	1690	1640	1590	1540	1490	1450				
37,0	3,3 - 22,9 3050	3050	3050	3050	2950	2700	2480	2385	2295	2210	2130	2060	1990	1920	1860	1800									
31,0	3,3 - 24,7 3050	3050	3050	3050	3050	2920	2690	2590	2490	2400															

m	max. kg m/kg	Drehkreis 2,9/3,5 m																							
		m/kg																							
45,0	3,3 - 20,0 3000	3,3 - 10,6 6000	6000	5770	5260	4820	4450	3845	3370	2995	2690	2430	2210	2020	1860	1790	1650	1530	1430	1330	1250	1210	1170	1135	1100
42,0	3,3 - 21,7 3000	3,3 - 11,5 6000	6000	6000	5735	5270	4860	4210	3700	3290	2950	2670	2440	2230	2060	1980	1830	1700	1590	1490	1390	1350			
37,0	3,3 - 22,9 3000	3,3 - 12,2 6000	6000	6000	6000	5610	5180	4480	3940	3500	3145	2850	2600	2380	2195	2110	1960	1820	1700						
31,0	3,3 - 24,7 3000	3,3 - 13,1 6000	6000	6000	6000	5590	4840	4260	3790	3410	3090	2820	2590	2390	2300										

m	max. kg m/kg	Auslegersteilstellung 30°, Drehkreis 2,9/3,5 m / Elevated jib 30° / Flèche inclinée 30°																						
		m/kg																						
45,0	3,1 - 14,6 3000	3000	2920	2720	2390	2120	1900	1710	1630	1550	1470	1420	1300	1240	1180	1150	1100	1060	1020	990	980	940	910	900
42,0	3,1 - 15,8 3000	3000	3000	2960	2600	2315	2080	1880	1790	1705	1620	1560	1430	1370	1300	1270	1220	1170	1130	1100				
37,0	3,1 - 17,3 3000	3000	3000	3000	2870	2560	2300	2080	1980	1890	1800	1730	1590	1530	1450									
31,0	3,3 - 19,4 3000	3000	3000	3000	3000	2890	2605	2360	2255	2160	2050													

Geschwindigkeiten

Speeds / Vitesses

	U/min. 0 ↔ 0,8 sl./min tr./min	4,0 kW, EDC
	8,0 / 30,0 / 60,0 m/min 0 ↔ 60,0 m/min	0,7 / 2,3 / 2,3 kW 2,8 kW, FU
	25,0 m/min 0 ↔ 25,0 m/min	2 x 1,5 kW, KL 2 x 1,5 kW, FU
	0 - 45° ca. 105 sec.	1,0 / 3,0 / 3,1 kW, KL 3,0 kW, FU


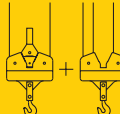
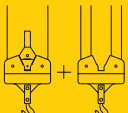
Leitungsquerschnitt bei 400 V
Cross section of cable
Section de câble à

Betriebsspannung 400 V
Operating voltage
Tension de service

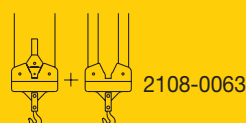
Technische Kenngröße nach BGL
Technical nominal size according to the construction machinery list (BGL)
Grandeur caractéristique suivant le barème d'emploi des appareils (BGL)

bis 99,0 m
up to
jusqu'à

Frequenz 50 Hz
Frequency
Fréquence

Hubwerk Hoist unit Mécanisme de levage	Stufe Step Cran	kg	m/min
15,0 kW, KL 	1	3050	6,0
	2	3050	25,0
	3	1600	48,0
15,0 kW, KL 	1	3000 6000	6,0 3,0
	2	3000 6000	25,0 12,5
	3	1600 3200	48,0 24,0
15,0 kW, FU 	1	3000 6000	5,0 2,5
	2	3000 6000	24,0 12,0
	3	2100 4200	34,0 17,0
	4	1300 2600	58,0 29,0

Anschlußwert
Power requirement
Puissance requise



Technische Daten - Technical data

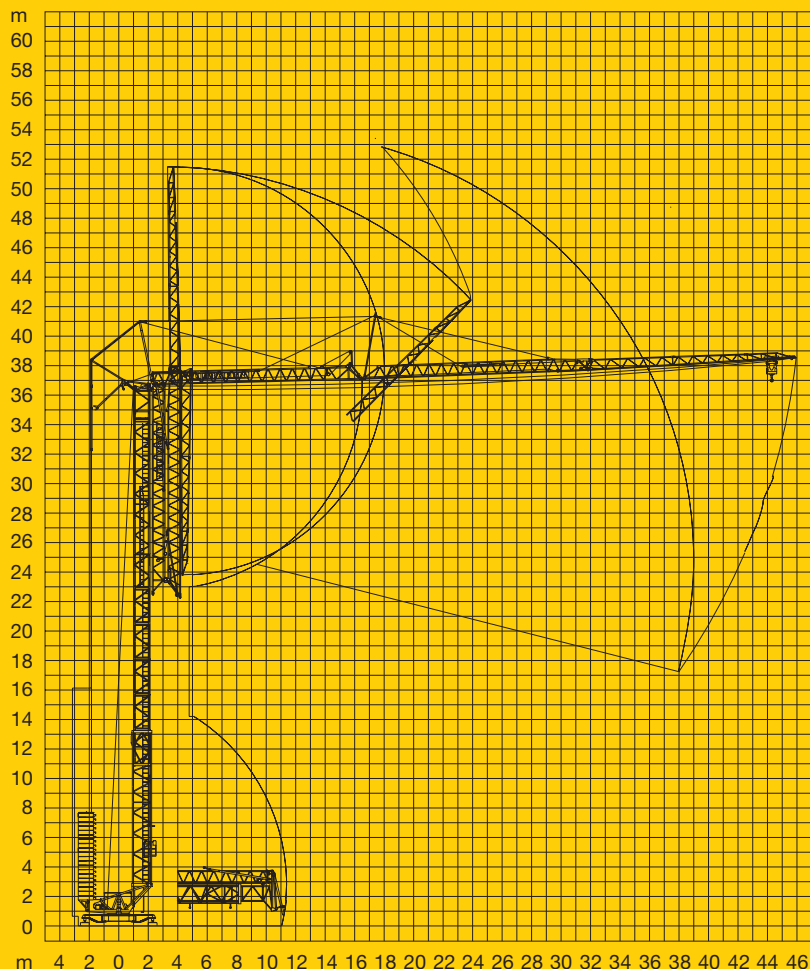
Caractéristiques techniques

Aufstellvorgang

Erection procedure

Déroulement de montage



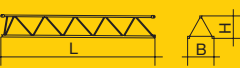
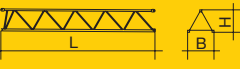




Ballasterausladung 5,0 m
Ballasting radius 5,0 m
Portée pour dispositif de lestage 5,0 m



Kolli-Liste

Packing List

Liste de colisage

Pos. Item Rep.	Anz. Qty. Qté			L (m)	B (m)	H (m)	kg
1	3	Turmstück (ohne Turmauflage) Tower section without tower support Élément de mât sans support de mât		2,50	1,10	1,10	490
2	1	Turmstück (mit Turmauflage) Tower section with tower support Élément de mât avec support de mât		2,50	1,10	1,10	563
3	1	Ausleger-Verlängerung 31,0 m – 37,0 m Jib extension Rallonge de la flèche		6,40	1,02	0,88	359
4	1	Ausleger-Verlängerung 37,0 m – 42,0 m Jib extension Rallonge de la flèche		5,10	1,02	0,70	157
5	1	Ausleger-Verlängerung 42,0 m – 45,0 m Jib extension Rallonge de la flèche		3,10	1,02	0,50	92
6	1	Transportachse vorne Tra 100 KY 1 Road transport axle front Essieux de transport avant		3,00	1,13	0,97	740
7	1	Transportachse hinten Tra 120 GY 1 Road transport axle behind Essieux de transport arrière		1,90	2,50	1,05	1250
8	1	Transportachse Tra 200 GZ 3 Road transport axle Essieux de transport		3,10	2,50	1,10	2500
9	1	Kiste mit Seilen und Kleinteilen Case with ropes and small parts Caisse avec câbles et pièces détachées		1,00	0,80	1,00	450

Datenblatt Nr. 120 P – 3862 H1 B3 DIN 15018 und OENORM T3 • 03.98

Data sheet

Feuille de caractéristiques

Konstruktionsänderungen vorbehalten!
Subject to alterations!
Sous réserves de modifications!

Printed in Germany.



Nehmen Sie Kontakt auf mit

Please contact

Mettez-vous en rapport avec

LIEBHERR-WERK BIBERACH GMBH, Postfach 1663, D-88396 Biberach an der Riß

☎ (0 73 51) 41-0, Fax (0 73 51) 4 12 25, <http://www.Liebherr.com>, E-Mail: info@lbc.liebherr.com