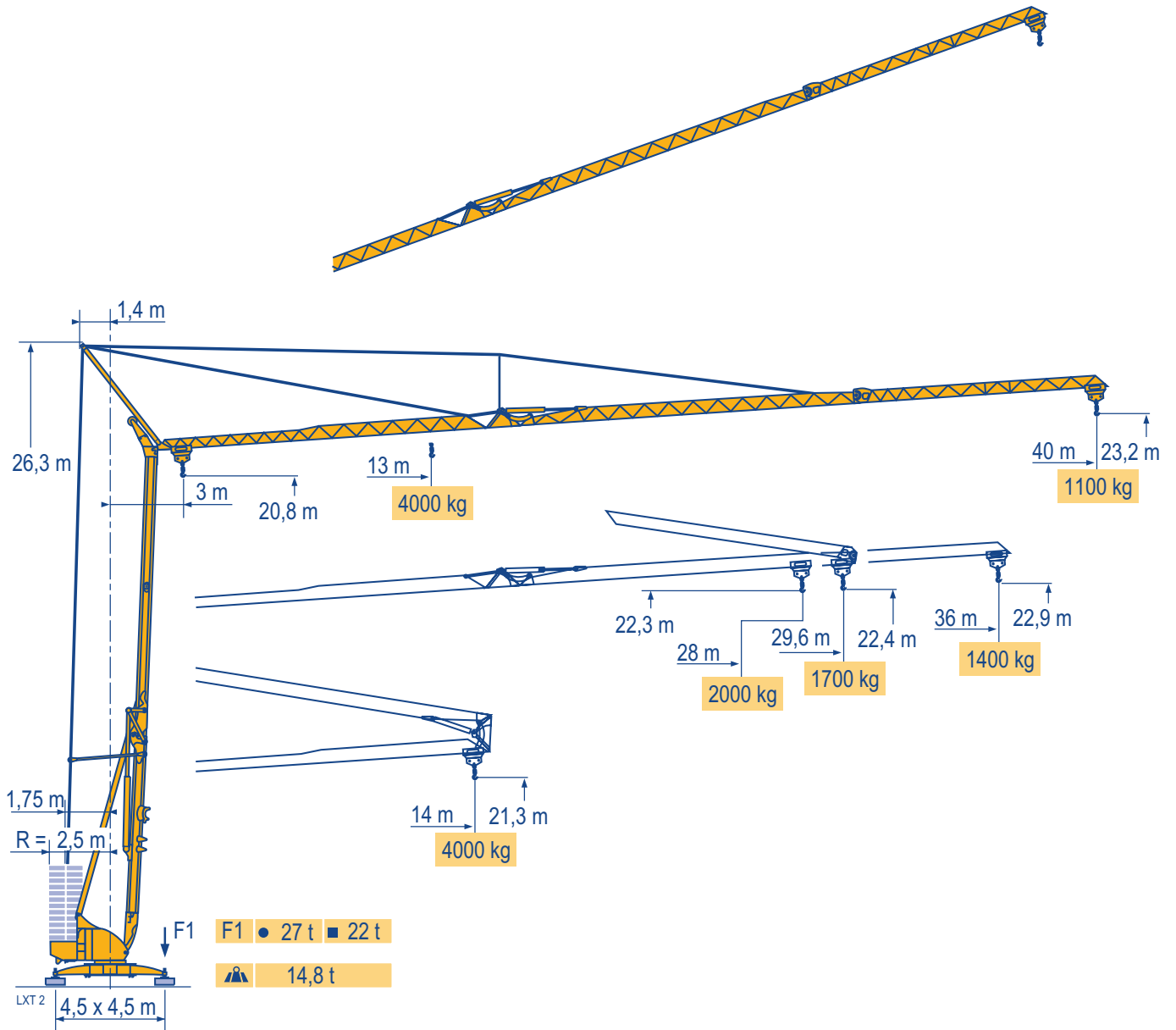


# POTAIN

## Igo 50



Courbes de charges  
Lastkurven

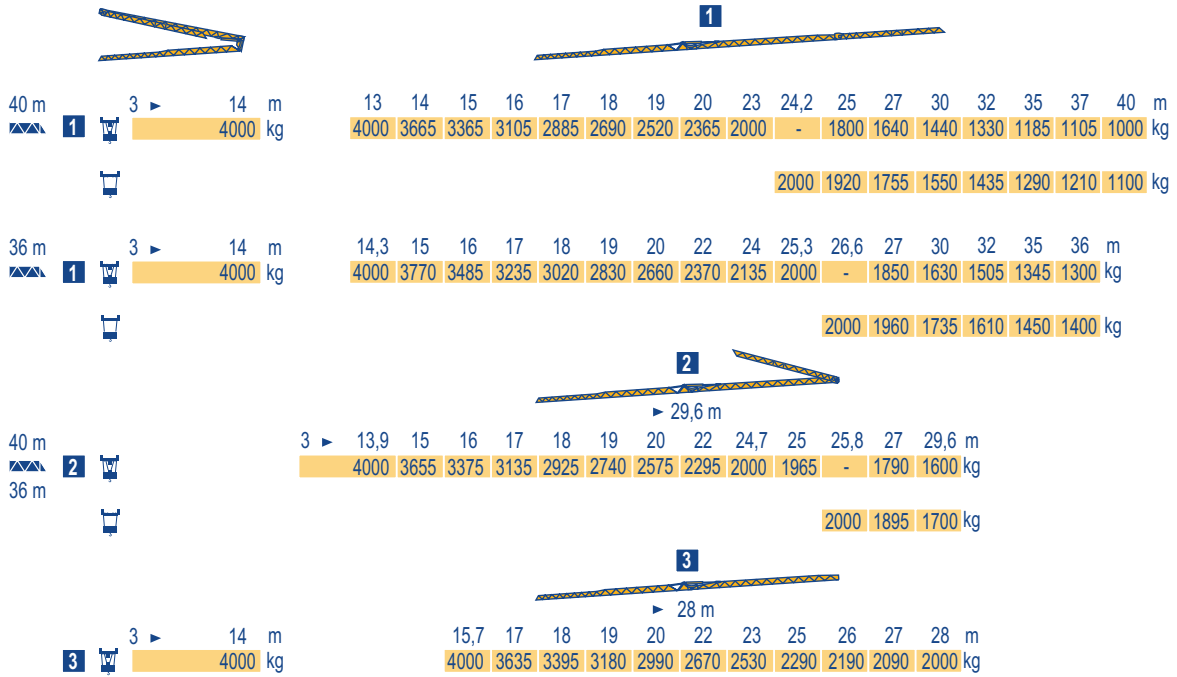
Load diagrams

Curvas de cargas

Curve di carico

Curva de cargas

LXT 2



Flèche relevée

Ausleger in Steilstellung

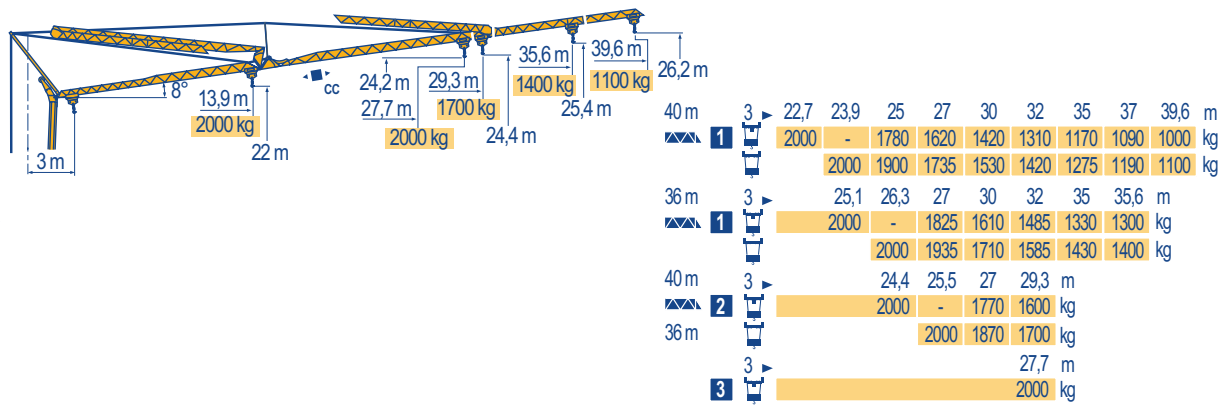
Luffing jib

Flecha izada

Braccio impennato

Lança inclinada

LXT 2



ООО "КРАНКО"  
+7 921 974 44 04  
info@kranco.ru



Igo 50

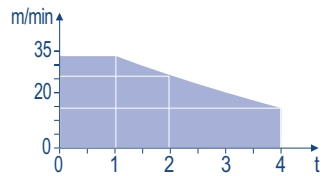
<b>F</b> Chariot distributeur Chariot distributeur et courbes de charges Réactions en service Réactions hors service A vide sans lest (ni train de transport) avec flèche et hauteur maximum.	<b>D</b> Verfahrbare Laufkatze Verfahrbare Laufkatze und Lastkurven Reaktionskräfte in Betrieb Reaktionskräfte außer Betrieb Ohne Last, Ballast (und Transportachse), mit Maximalausleger und Maximalhöhe.	<b>GB</b> Traversing trolley Traversing trolley and load diagrams Reactions in service Reactions out of service Without load, ballast (or transport axles), with maximum jib and maximum height.	<b>E</b> Carro distribuidor Carro distribuidor y curvas de cargas Reacciones en servicio Reacciones fuera de servicio Sin carga, sin lastre, (ni tren de transporte), flecha y altura máxima.	<b>I</b> Carrellino distributore Carrellino distributore e curve di carico Reazioni in servizio Reazioni fuori servizio A vuoto, senza zavorra (ne assali di trasporto) con braccio massimo e altezza massima.	<b>P</b> Carro distribuidor Carro distribuidor e curva de cargas Reações em serviço Reações fora de serviço Sem carga (nem trem de transporte)- sem lastro com lança e altura máximas.
--	---	---	--	---	---

Mécanismes  
Antriebe  
Mechanisms  
Mecanismos  
Meccanismi  
Mecanismos

LXT 3

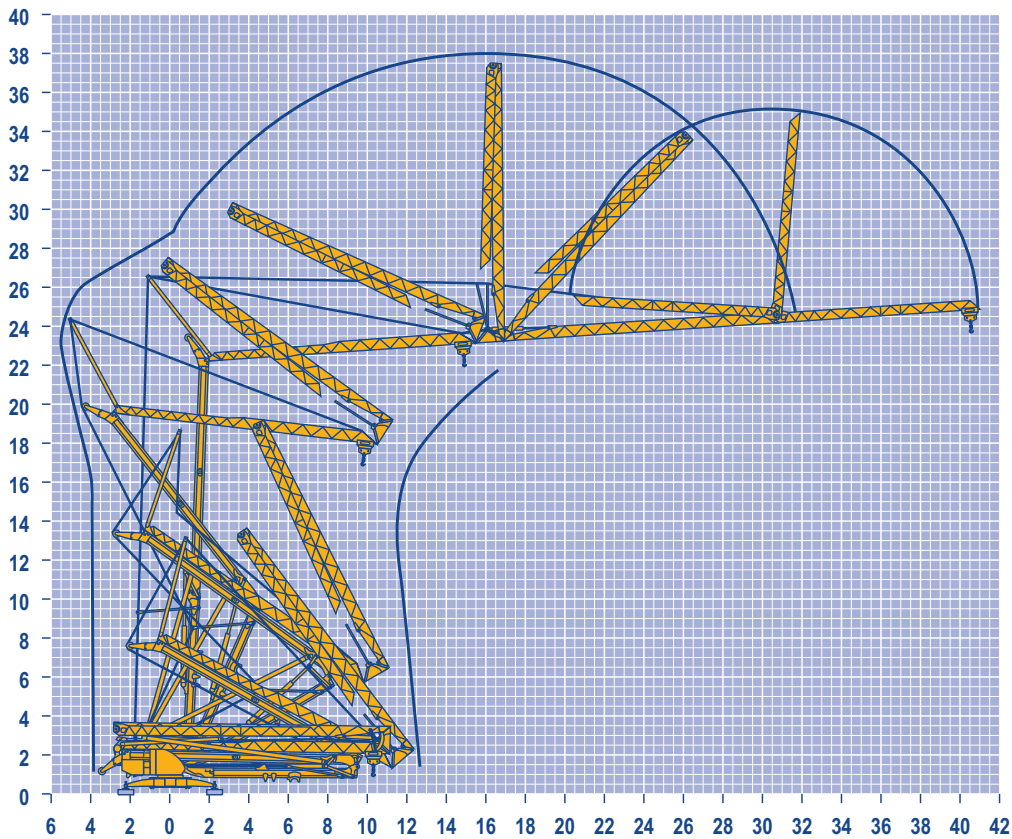
												ch - PS hp	kW	
	15 LVF 10 Optima	m/min	3,6	18	30	49	66						15	11
		kg	2000	2000	2000	1100	500							
	3 DVF5	m/min	19 - 45 (0 → 1000 kg) - 19 - 41 (1000 → 4000 kg)									3	2,2	
		tr/min U/min rpm	0 → 0,8											
	RVF+ 51	tr/min U/min rpm	0 → 0,8									5,5	4	
		CEI 38  IEC 38		kVA										
		400 V (+6% -10%) 50 Hz		15 LVF 10 : 23 kVA										

15 LVF 10  
Optima



Montage  
Montage  
Erection  
Montaje  
Montaggio  
Montagem

LXT 1



Igo 50

POTAIN

F



Leverage  
Distribution  
Orientation

D

Heben  
Katzfahren  
Schwenken

GB

Hoisting  
Trolleying  
Slewing

E

Elevación  
Distribución  
Orientación

I

Sollevamento  
Distribuzione  
Rotazione

P

Elevação  
Distribuição  
Rotação

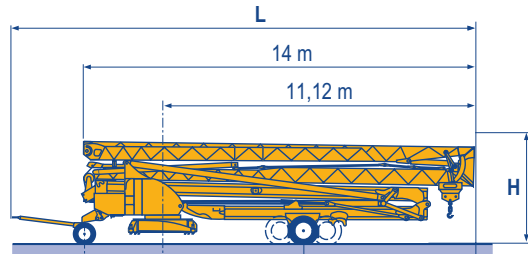
**KRANCO**

OOO "KPAHKO"  
+7 921 974 44 04  
info@kranco.ru

- Transport ○
- Transport
- Transport
- Transporte
- Trasporto
- Transporte

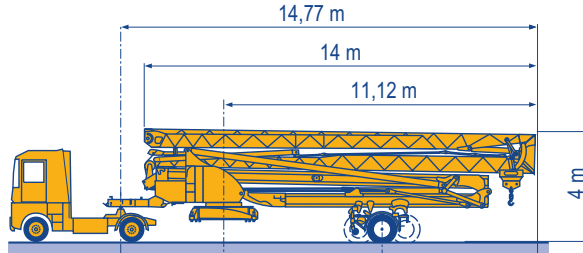
- DJ100/S120 ○
- DJ105/S125
- DJ126M/S125
- DJ126M/S215M

LXT 4



				H	L
DJ100/S120	2,75 m	5,25 m	5,87 m	3,57 m	16,39 m
DJ105/S125	2,75 m	5,25 m	5,87 m	3,57 m	16,39 m
DJ126M/S125	2,75 m	5,25 m	5,87 m	3,57 m	16,96 m
DJ126M/S215M	3,55 m	4,93 m	6,19 m	4 m	17,75 m

- SL122/J215M
- SL121/J135
- SL121/S215M



SL122/J215M	3,65 m	4,93 m	6,19 m
SL121/J135	3,65 m	5,88 m	5,24 m
SL121/S215M	3,65 m	4,93 m	6,19 m

- **F**  
Chantier
- D**  
Baustelle
- GB**  
Site
- E**  
Obra
- I**  
Cantiere
- P**  
Estaleiro



Document commercial non contractuel. Pour toute information technique se référer à la notice correspondante.

Unverbindliches Vertriebsdokument. Für technische Informationen, siehe die entsprechenden Anweisungen.

This commercial document is not legally binding. For any technical information, please refer to the corresponding instructions.

Documento comercial no contractuel. Para cualquier información técnica, ver la noticia correspondiente.

Documento commerciale non vincolante, per tutte le informazioni tecniche fare riferimento al catalogo istruzioni.

Documento comercial não contratual. Para qualquer informação técnica complementar consultar as respectivas instruções.



OOO "KPAHKO"  
+7 921 974 44 04  
info@kranco.ru



18, rue de Charbonnières - B.P.173  
69132 ECULLY Cedex - France

Tél. : +33 (0) 4 72 18 20 20  
Fax. : +33 (0) 4 72 18 20 00  
www.manitowoccrane.com



**Americas**  
Tel : +1 888 479 7278  
Tel : +1 717 593 2000

**Europe - Middle East - Africa**  
Tel : +33 (0) 4 72 81 50 00  
Tel : +44 (0) 191 522 2000

**Asia - Pacific**  
Tel : +65 6264 1188  
Fax : +65 6862 4040

www.manitowoccrane.com

**Igo 50**

Code Z-91985-50\_Réf. 2003 48 LXT 6

Copyright.Reproduction interdite © POTAIN 2003

Réalisation Secloc